

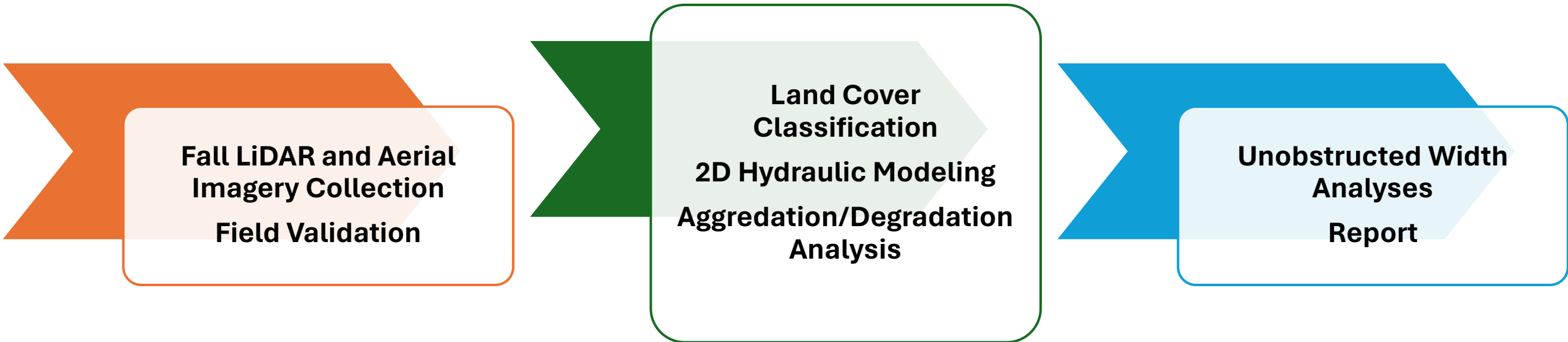
# Geomorphology and Vegetation Monitoring Update

---

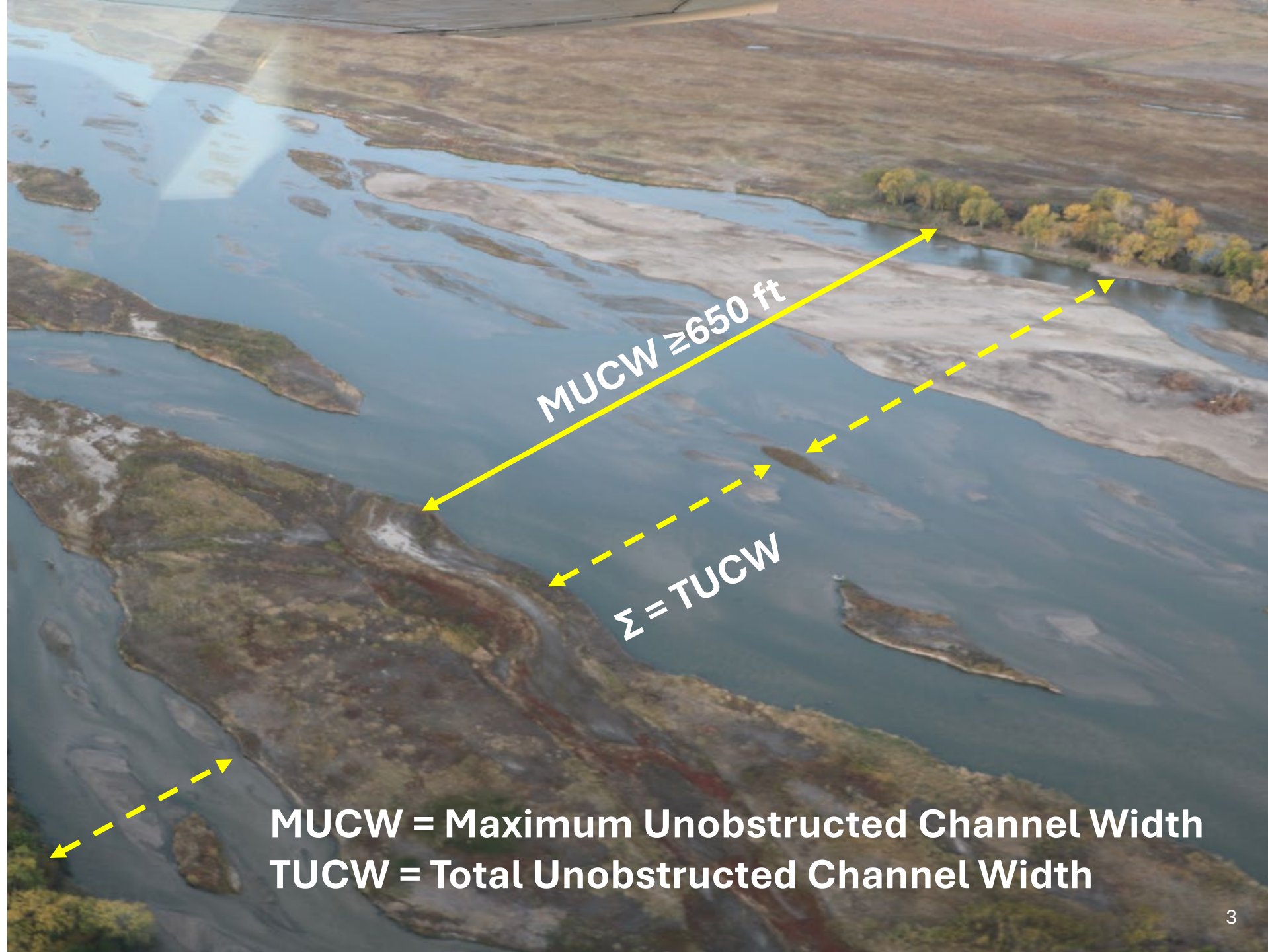
Libby Casavant



# Annual Monitoring Activities and Output

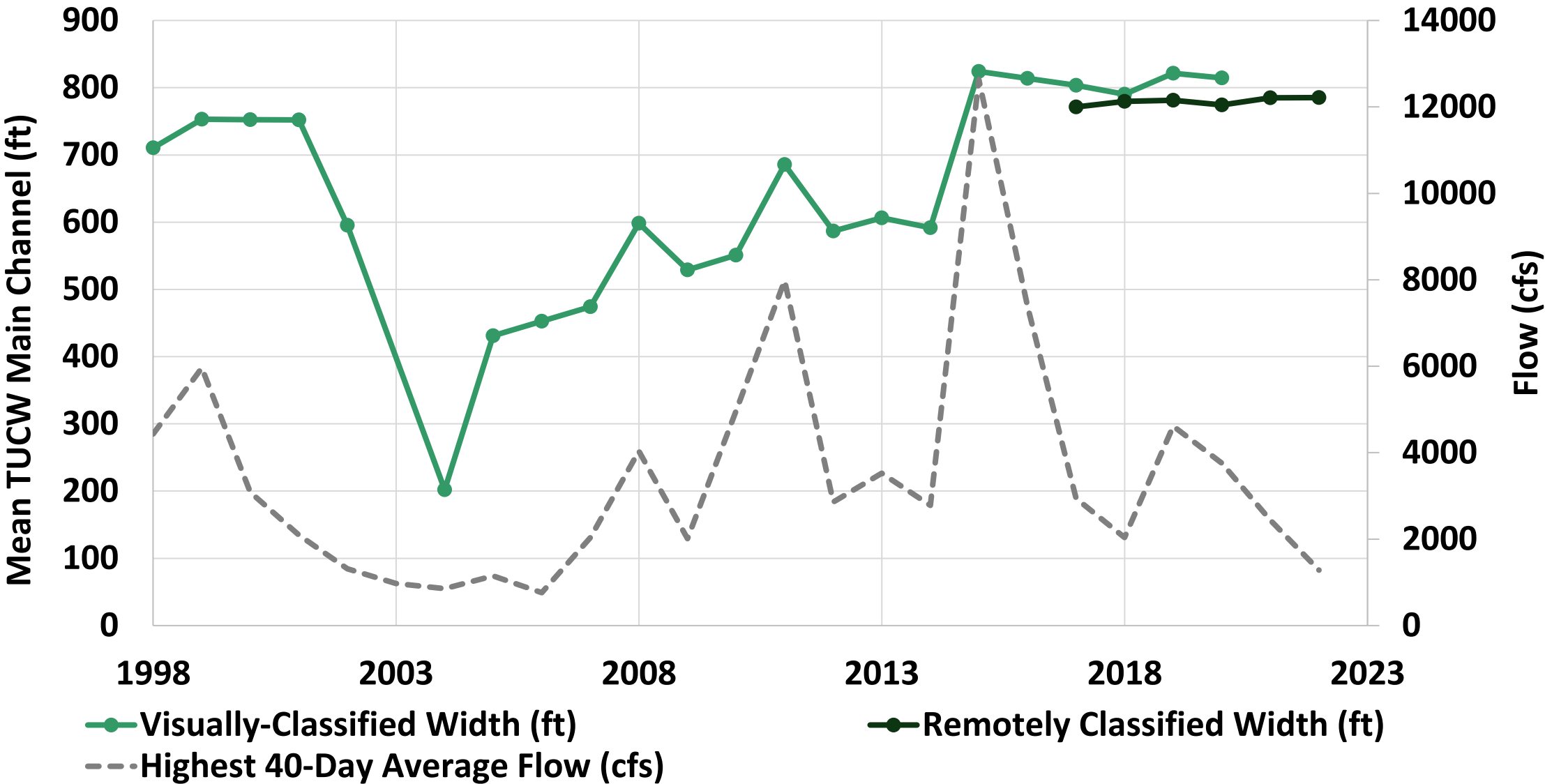


# Unobstructed Widths

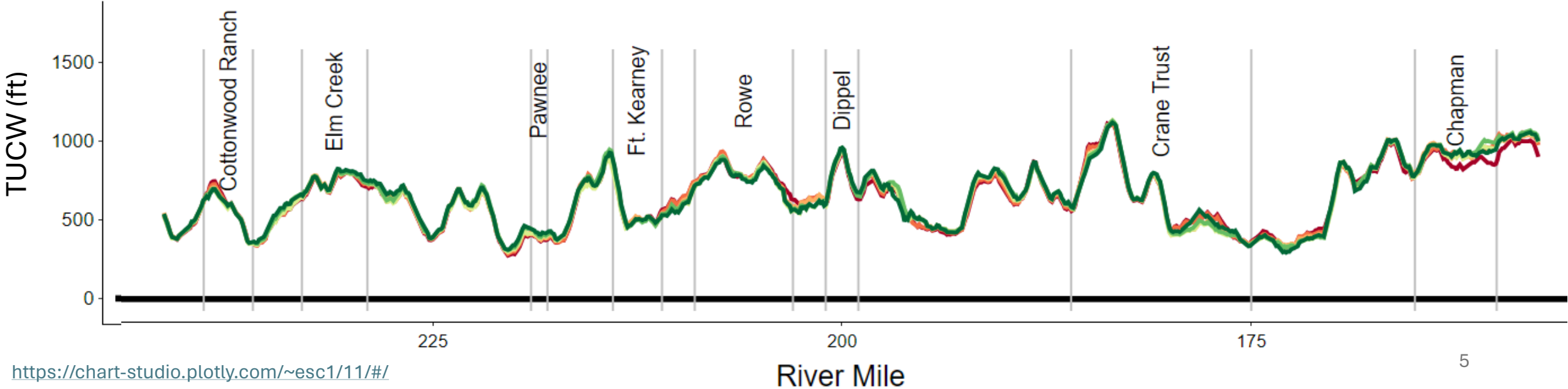
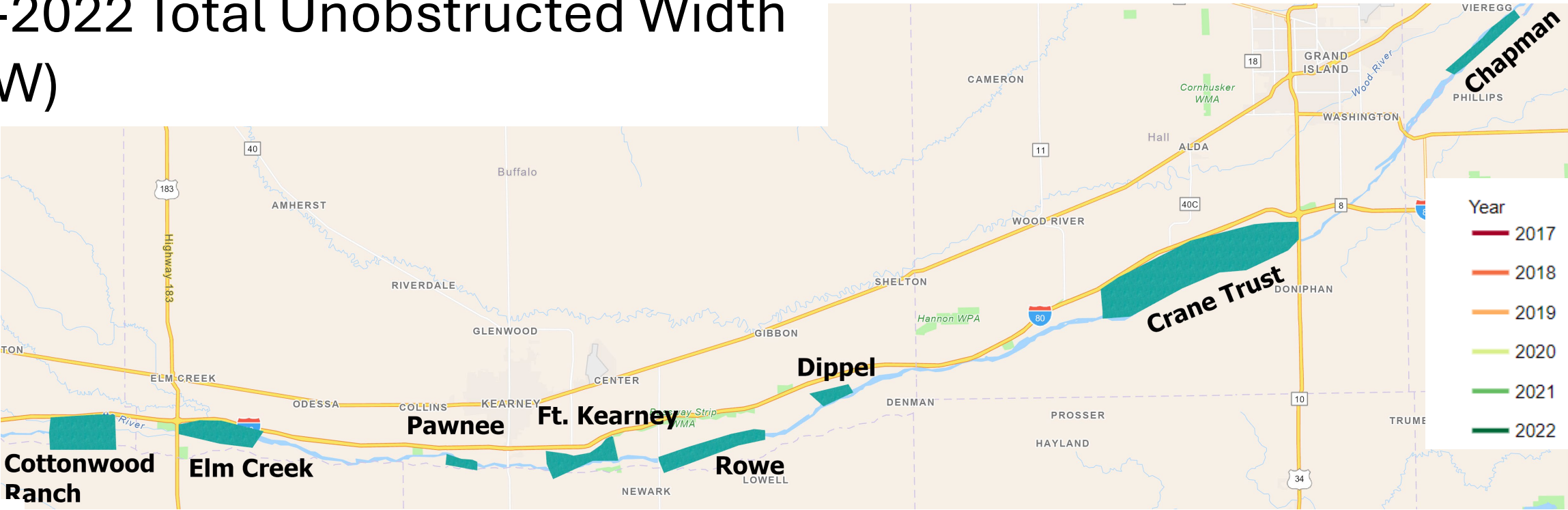


**MUCW = Maximum Unobstructed Channel Width**  
**TUCW = Total Unobstructed Channel Width**

# 1998- 2022 Mean Total Unobstructed Width (TUCW)

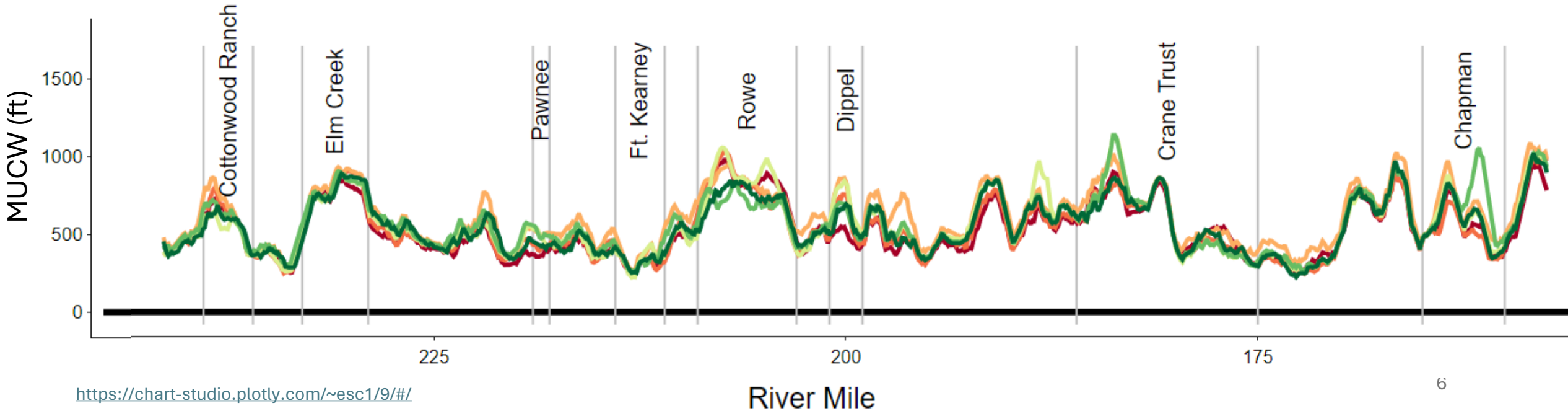
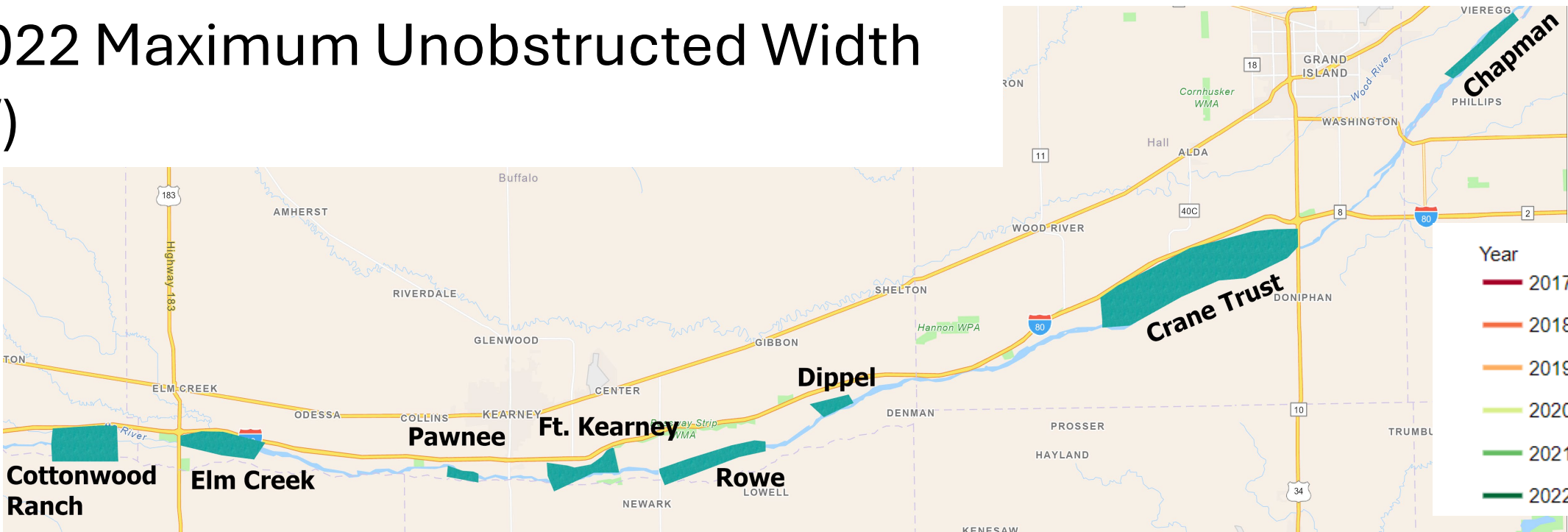


# 2017-2022 Total Unobstructed Width (TUCW)





# 2017-2022 Maximum Unobstructed Width (MUCW)



# Hydraulic Modeling Update



SRH-2D

HEC-RAS  
2D

- Finer, faster, open-source
- Some systematic changes to wetted width results expected